






# LA'GEM AGRO VALUE CHAIN LIMITED



*... Keep intergrated agro-industrial  
productivity & impact going!*

Reservation© | **2022 LA'GEM AGRO VALUE CHAIN LIMITED**

The information herein shall not be used in part or completely for any purpose other than evaluation of the prospects of the enterprise.

 13b, Jesus Avenue, BHD, Trinitate Int'l School, Eneka/Igwurita Road, Igwurita, Port Harcourt, Rivers State, Nigeria  
 MFON.BUSARI16@GMAIL.COM  
 +234(0)706 109 8888

*As Consolidated by the Profile Builders Consulting Group-  
Member, Institute of Consulting; Senior Research Fellows, Institute for Commerce and Enterprise Development; Affiliate, World Confederation of Businesses; Member, Project Management Institute; Member, Institute of Professional Managers and Administrators of Nigeria.*



## THE COMPANY

LA'GEM AGRO VALUE CHAIN LIMITED is a specialist agricultural value chain development company.

The company is distinctive for its precision on providing tailored development, facilitation, and management solutions in agricultural production, processing and services sectors towards the realization of sustainable productivity outcomes.

With a pool of resources, experience and expertise to cater for end-to-end enterprise needs, LA'GEM AGRO VALUE CHAIN LIMITED is engaging optimal capabilities and applications to deliver topmost value in agricultural resourcing, operations management, infrastructural, broader social and economic growth.



## MISSION

**Committed to the mission of fostering integrated agricultural value chain productivity towards realizing a food-secure Nigeria**



## VISION

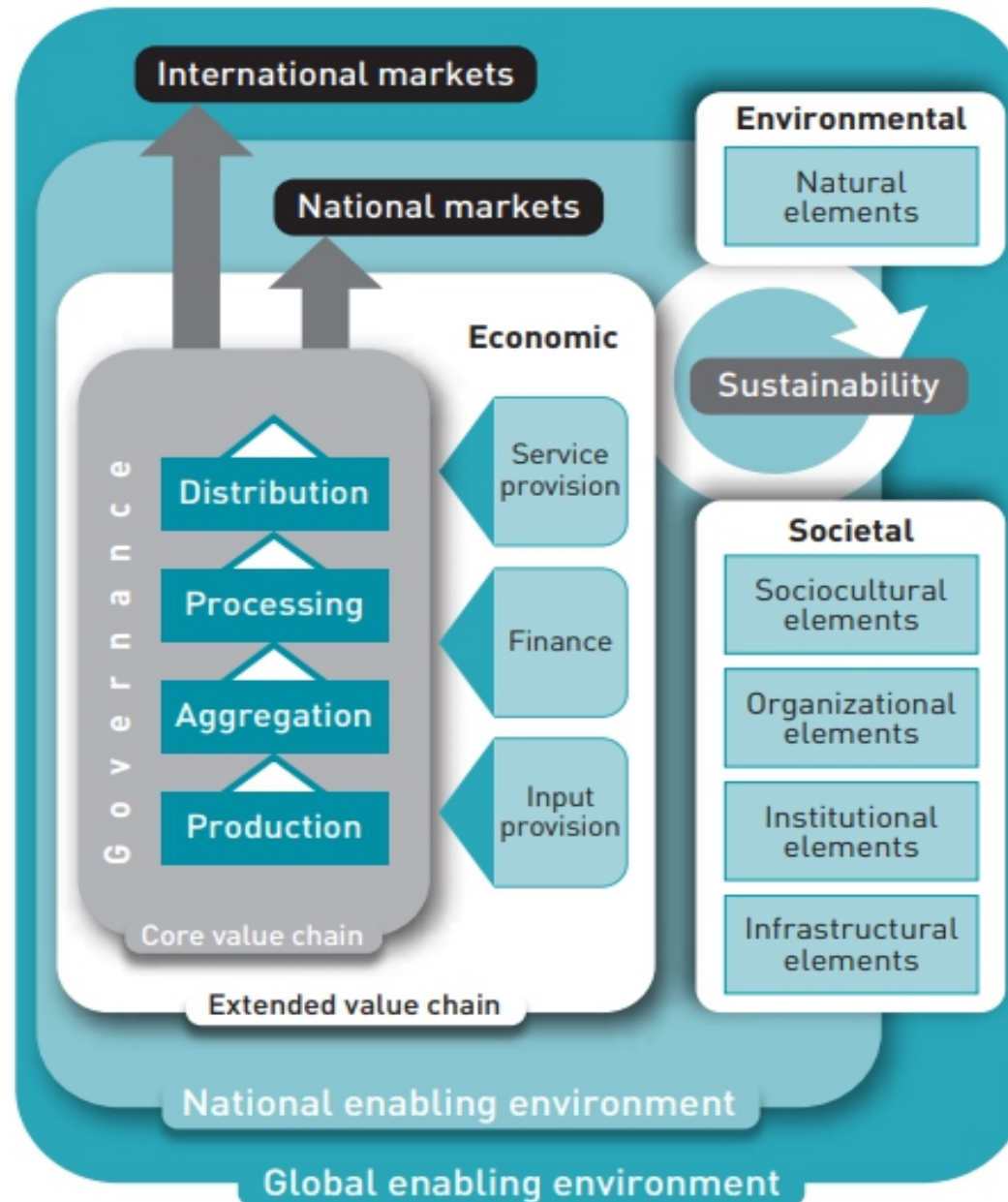
**Envisions its leadership as the foremost inclusive and sustainable agricultural value chain development company in Nigeria**



## CORE VALUES

- Systematic
- Efficiency
- Inclusion
- Impact
- Progressive

# PRINCIPLES & OPERATING FRAMEWORK





## STRATEGIC OBJECTIVES

Effective utilization and management of agricultural resources to ensure value optimization and sustainable productivity

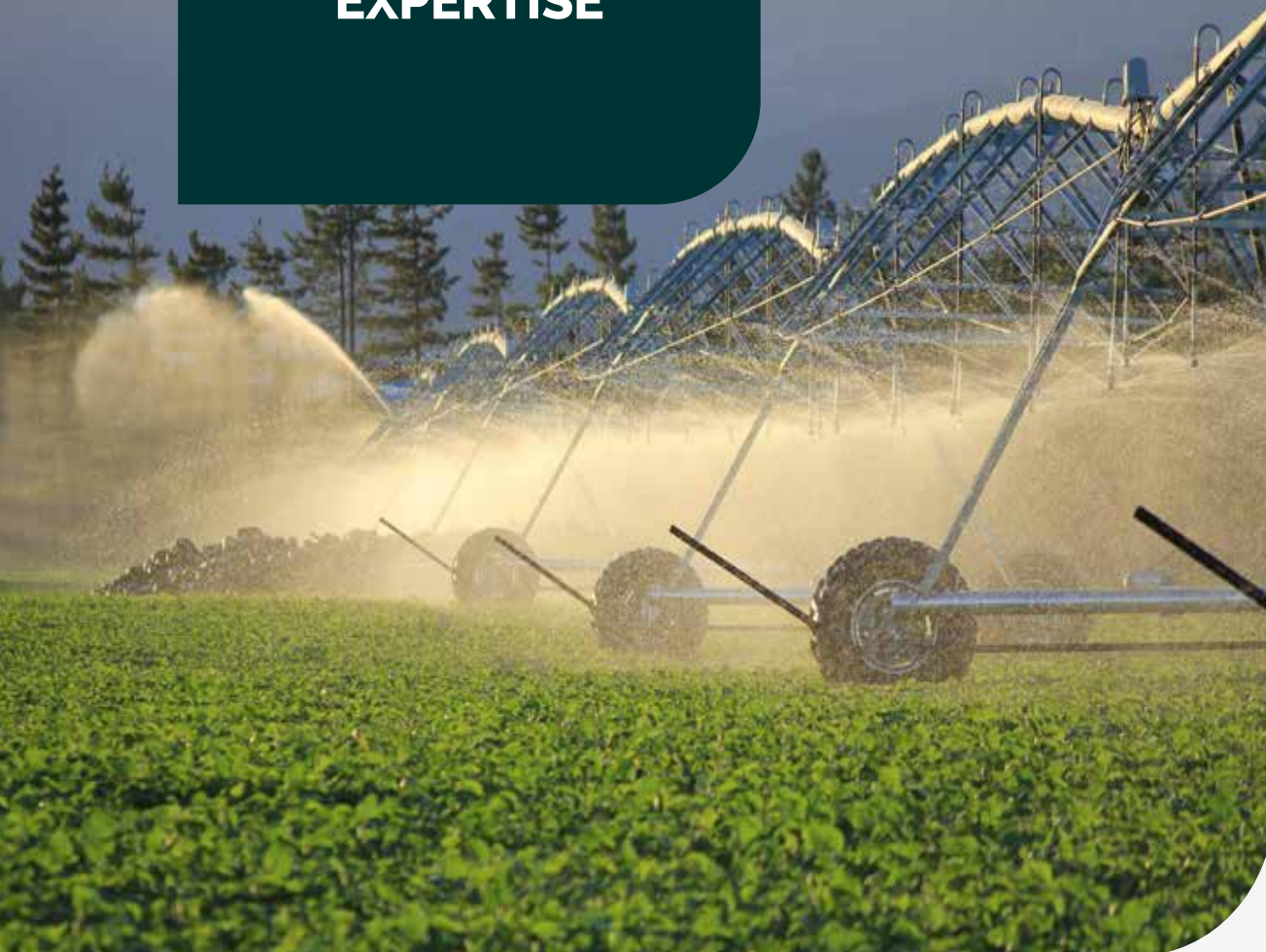
Foster efficiencies across various agricultural commodity value/supply chains

Improve industry knowledge and understanding of agricultural environments and markets

Increase promotion and adoption of responsible environmental stewardship

Maintain and grow market access while capitalizing on new market and product opportunities

## OUR EXPERTISE



LA'GEM AGRO VALUE CHAIN LIMITED upholds distinctive expertise in the development and management of the agro-industrial value and supply chains while being inclined to rendering highly functional technology-driven solutions through onsite production capabilities.

### **Agricultural Enterprise Development and Administration**

- Strategic Planning and Management

## Production Works

Crop Farming

Livestock Farming

Aquaculture

Horticulture

Forestry

Processing

Manufacturing



## Procurement and Supply Management





Procurement

Warehousing

Haulage and Distribution





-  **Agricultural Commodities Trade and Commerce**
-  **Training and Extension**
-  **Agricultural Construction and Engineering**
-  **Agricultural Policy Development, Reformation and Advocacy**

 **Facilitation and Supporting Functions**

**Agro-industrial Research and Development**

**Training and Extension**

**Asset and Facility Management**

**Field Operations Support**

**Surveys and Valuations**

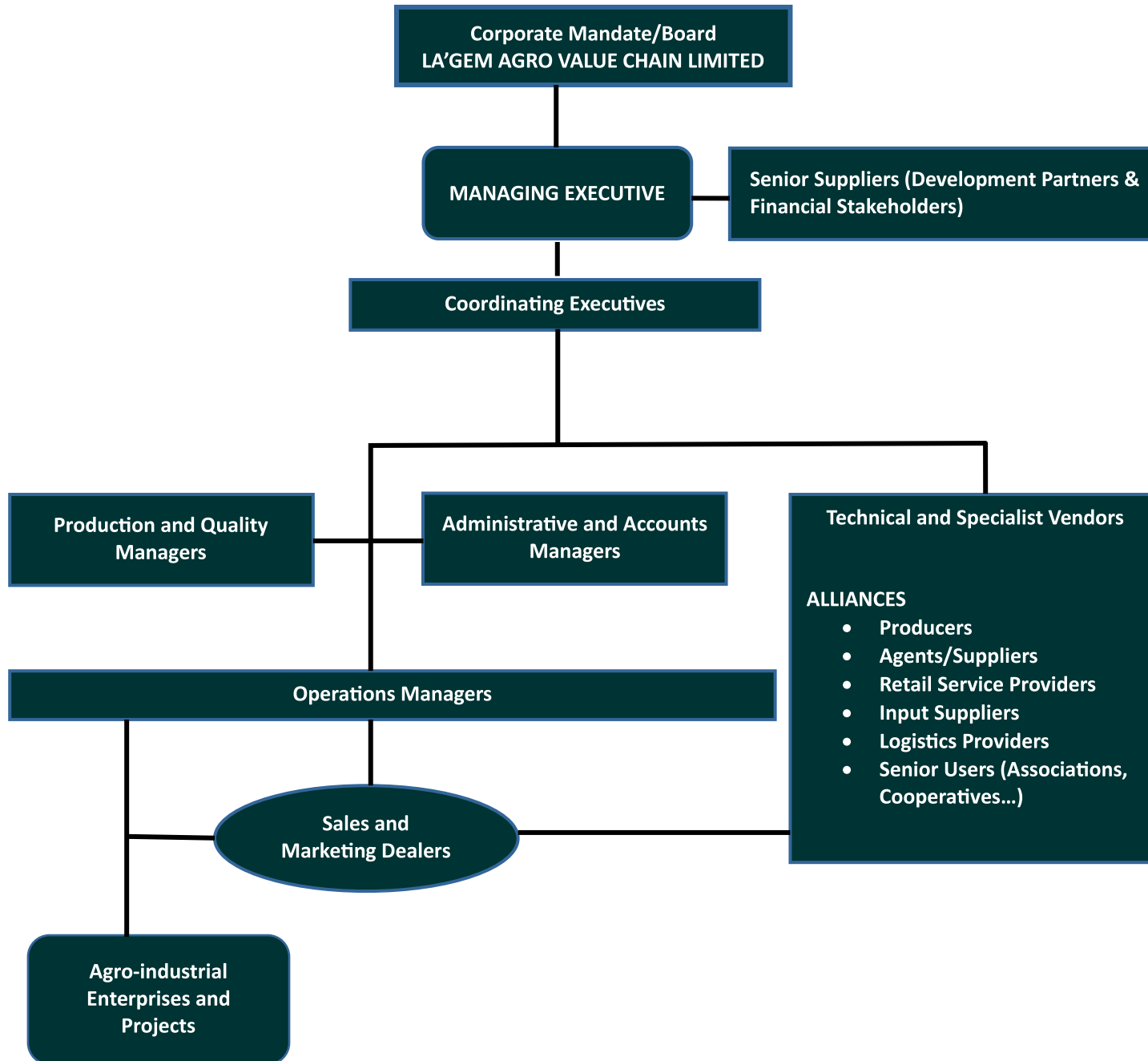


## OUR ORGANIZATION

LA'GEM AGRO VALUE CHAIN LIMITED adopts a unique organizational structure that is both flexibly and functionally, a superb blend of a task-based and a matrix organization with organized structure to extract value from global processes and resource pool, centralized management, and focus on general creativity and technical innovation.

The Organization ensures the commitment of the skills and knowledge necessary to meet the challenges of a technologically-advancing world.

Whether working on small, custom-built works, or large-scale complex projects, the focus of LA'GEM AGRO VALUE CHAIN LIMITED remains on working with quality operatives and setting quality standards and delivering works that meet sustainable objectives.





## RESOURCING

LA'GEM AGRO VALUE CHAIN LIMITED has pooled a significant base of resources for stimulating agro-industrial productivity.

### **HOLDERS:**

Over 5,000 farmers and agro-industrial producers within purview

### **LANDS:**

Over 50,000 hectares of arable plains

### **STORAGE:**

Over 100,000 metric tons in commodities storage capacity

### **PROCESSING:**

Over 300,000 metric tons per annum agro-commodities processing and priming capacity

### **TRADE:**

Capacity for trade of over 50,000 metric tons of various agricultural commodities

# OUR PRODUCTS

## CEREALS/GRAINS AND LEGUMES



**Maize**



**Groundnut**



**Rice**



**Millet**



**Wheat**



**Beans**



**Cow Pea**



**Sesame**



**Sorghum**



**Soybeans**

## ROOTS AND TUBERS



**Cassava**



**Cocoyam**



**Potatoes**



**Yam**

# OUR PRODUCTS

## OILS



**Ginger Oil**



**Sesame Seed Oil**



**Groundnut Oil**



**Maize Oil**



**Castor Oil**



**Coconut Oil**



**Shea Butter Oil**



**Soy Bean Oil**

## TREE CROPS, CASH CROPS AND NUTS



**Cocoa**



**Cashew Nuts**



**Palm Oil**



**Bitter Kola**



**Kola Nuts**



**Coconut**

# OUR PRODUCTS

## HERBS AND SPICES



**Anise**



**Basil**



**Bay Leaves**



**Cardamom**



**Cinnamon**



**Cloves**



**Coriander**



**Cumin**



**Ginger**



**Fennel**



**Fenugreek**



**Garlic**



**Lemon Grass**



**Marjoram**



**Mint**



**Onions**



**Hibiscus**



**Thyme**



**Tumeric**



**Parsley**

# OUR PRODUCTS

## FRUITS AND VEGETABLES



**Beetroot**



**Pineapple**



**Broccoli**



**Cauliflower**



**Cabbage**



**Cucumber**



**Egg Plant**



**Leek**



**Lettuce**



**Tomatoes**



**Peas**



**Oranges**



**Mangoes**



**Grapes**



**Mushroom**



**Radish**



**Spinach**



**Asparagus**



**Melon**



**Parsley**



# OUR PRODUCTS

## LIVESTOCK AND LIVESTOCK PRODUCTS



**Cattle**



**Goats**



**Sheep**



**Poultry**



**Animal Offal**



**Rabbits**



**Grass Cutter**



**Meat**



**Milk**



**Eggs**



## SUPPORTING ESSENTIALS

- **ADDING VALUE ACROSS ALL POINTS OF THE AGRO-INDUSTRIAL VALUE CHAIN**
- **DELIVERING EFFICIENCY IN PERFORMANCE AND SUSTAINABILITY**
  - Enhancing inclusive and ethical industry governance
  - Necessity of natural resource conservation
  - Sustainable materials and technologies
  - Market internationalization

---

©2022

**LA'GEM AGRO VALUE CHAIN LIMITED**